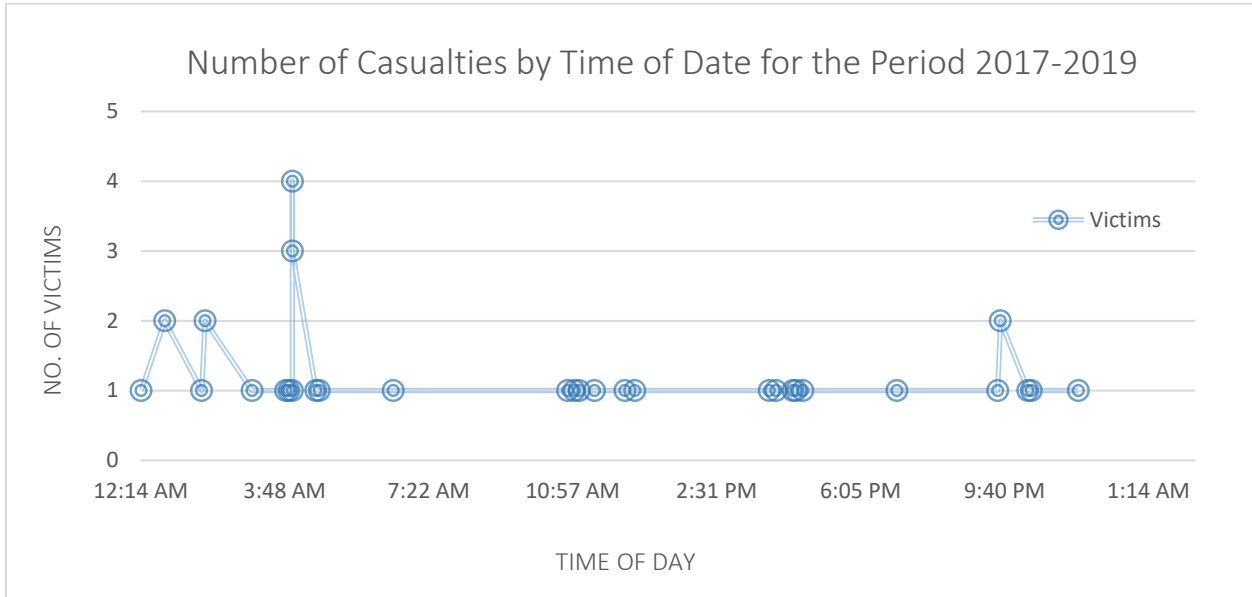
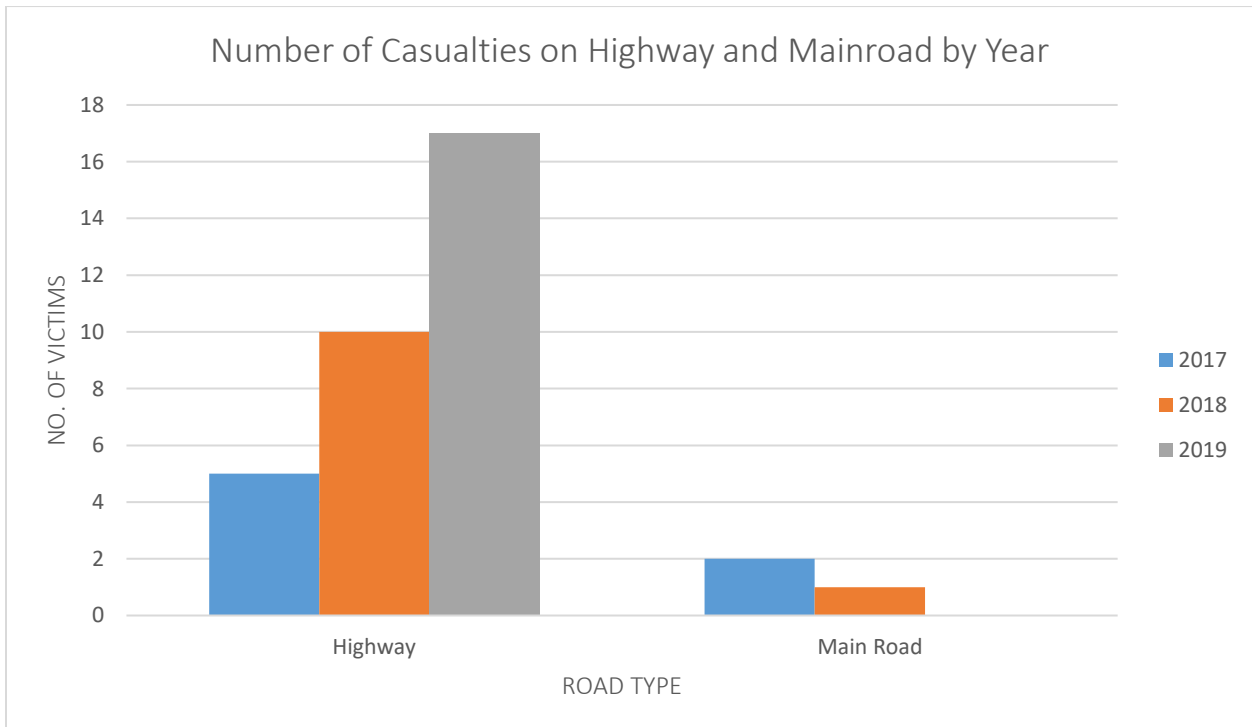


TTPS 2017-2019 Report on Lives Lost Due Crashes with Electricity Posts

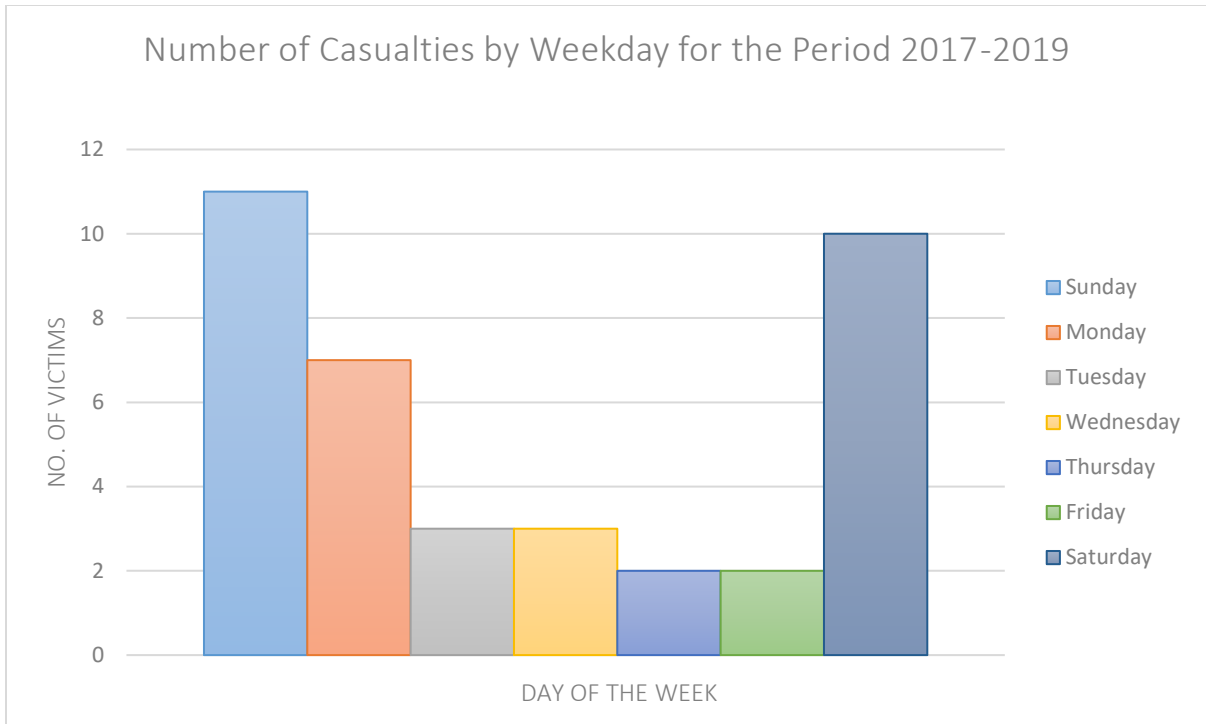
Assessment of Results by Rae J. Furlonge



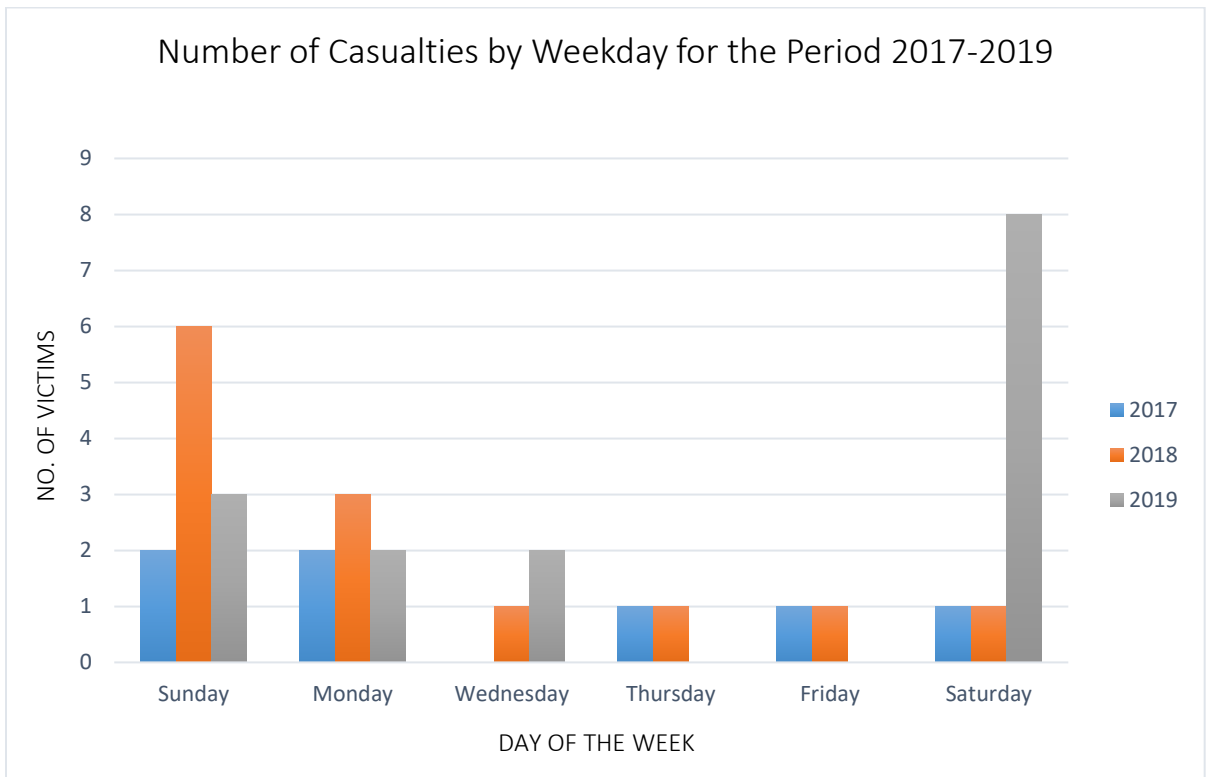
Most of these fatalities occur between 6:00pm and 6:00am.



The fatalities on the main roads are decreasing, but those on the highways are increasing rapidly.

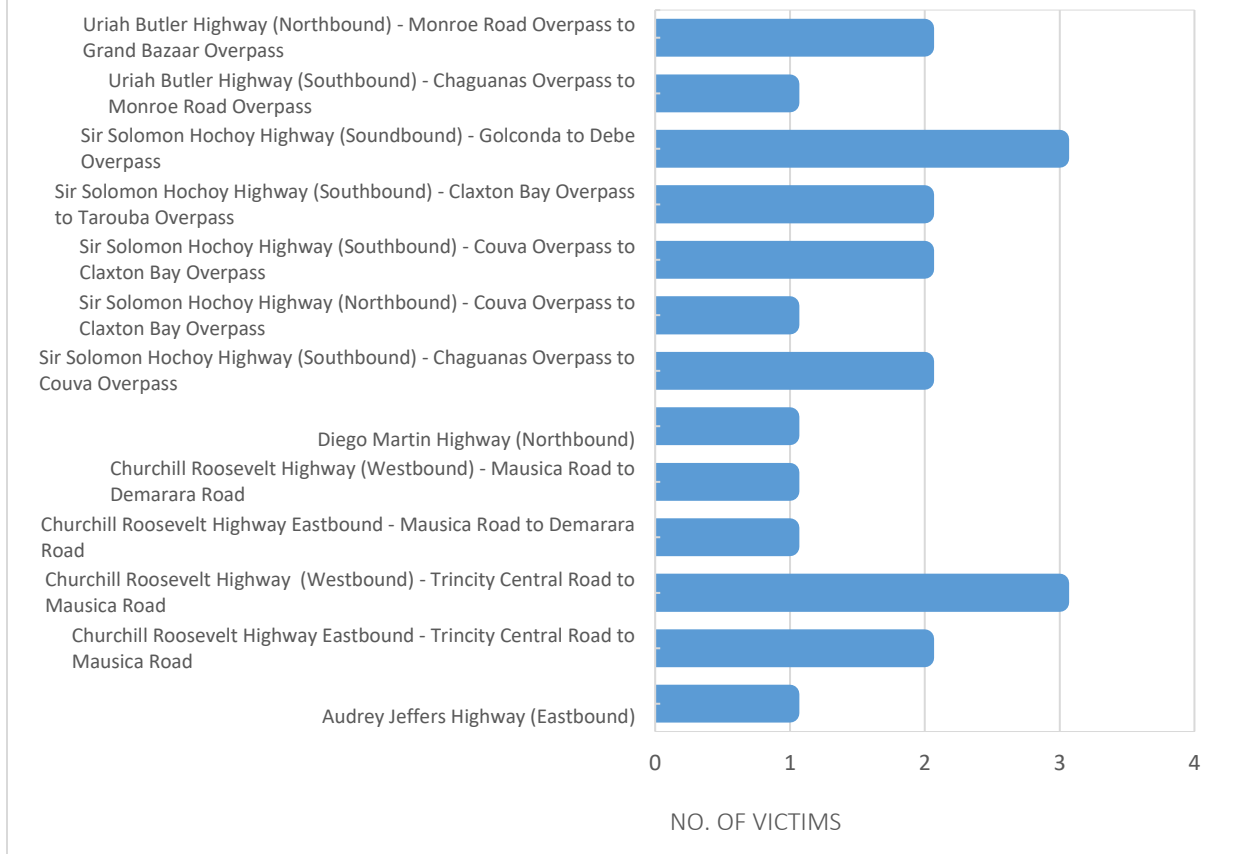


Occurrences of these fatalities are especially high on Saturdays and Sundays.



Fatalities on Saturday nights in 2019 are particularly high.

Number of Casualties by Highway Segment for the Period 2017-2019



Highway links that have had the most fatalities: (a) Solomon Hochoy Highway southbound from Golconda Interchange to Debe Interchange, and (b) Churchill-Roosevelt Highway westbound from Mausica Road Intersection to Trincity Central Road Intersection.